



# 2018 Annual Scientific Gender Conference

---

September 25-27 2018

**Rhiannon Pyburn**

Coordinator

Senior Advisor, Royal Tropical Institute (KIT)

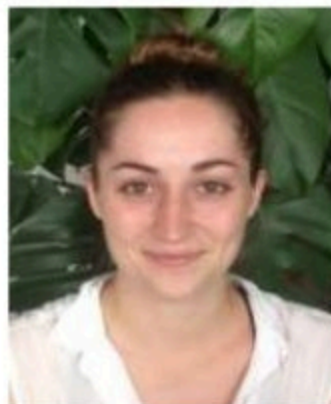
ILRI Campus, Addis Ababa, Ethiopia

September 25 2018

# Our team 2018



Rhiannon Pyburn  
Platform Coordinator



Andrea Vos  
Assistant to the Coordinator



Ewen Le Borgne  
Communication and Knowledge Management

Anouka van Eerdewijk  
Engendering Data and Methods blog



Peter Gildemacher  
Gender / Seed Systems grants



Marcelo Tyszler  
Big Data collaboration



Cheryl Doss, Oxford/PIM  
Research grants etc. etc.



## Logistics team and program committee



Nicoline de Haan (ILRI-NBO)



Liza Debevec (WLE/IWMI)



Isabelle Baltenweck (ILRI-NBO)



Joyce Wanderi (ILRI-NBO)  
[gender.cgiar.org](http://gender.cgiar.org)



Thomas Getahun (ILRI-ET)



Tiruwork Melaku (ILRI-ET)



## Advisory Committee



The Advisory Committee has five members; one senior gender specialist from a global integrative CGIAR Research Programs (CRPs), two senior gender scientists from agri-food systems CGIAR Research Programs, one specialist from outside CGIAR, and the Senior Research Fellow from the CGIAR Research Program on Policies, Institutions, and Markets (PIM) Program Management Unit. In June 2017, a nomination and voting process was undertaken for the three internal seats on the Advisory Committee. This was open to scientists working on gender from across CGIAR and the selections were endorsed by CGIAR Science Leaders.

Two agri-food system CGIAR Research program gender scientists – **Nicoline de Haan** and **Bimbika Basnett** – and one global Integrated CGIAR Research Program gender scientist – **Hazel Malapit** – fill the internal seats. **Eija Pehu** is the external representative and was selected by the PIM management Committee and **Frank Place** was appointed to represent the Program Management Unit of PIM. Members of the Advisory Committee will serve for a term of two years.

The Advisory Committee meets quarterly either virtually, or in person (once a year to coincide with the annual scientific conference). Its main functions are to:

### About Us

#### Advisory committee

- Good practices
- Post-doctoral fellows
- Progress CGIAR Gender Research
- Gender Strategies
- Contact information



### Bimbika Sijapati Basnet

Social Scientist and Gender Coordinator at the Center for International Forestry Research (CIFOR)



### Hazel Malapit

Gender Research Coordinator for the CGIAR Research Program on Agriculture for Nutrition and Health (A4NH)



### Nicoline de Haan

Gender Research Coordinator for the CGIAR Research Program on Livestock

Senior researcher and leader for the gender team at the International Livestock Research Institute (ILRI)



### Frank Place

Senior Research Fellow at the International Food Policy Research Institute (IFPRI) and representative of the CGIAR Research and the CGIAR Research Program on Policies, Institutions, and Markets (PIM) Management Unit



### Eija Pehu, PhD

# CGIAR Collaborative Platform for Gender Research



- Housed in the CGIAR Research Program on Policies, Institutions, and Markets (PIM), and serving **all 12 research programs** and **15 CGIAR Centers**
- Launched **January 2017** building on the foundation of the phase 1 “Gender Network”
- Focus on **gender research** relevant across CGIAR aqua/agricultural and natural resource management domains

## Mandate

- Increase **visibility** and **profile** of gender research *within* CGIAR and internationally
- Raise the **quality** of CGIAR gender research, e.g. through knowledge-sharing to promote joint approaches and methods, capacity development and fostering adherence to minimum standards for sex-disaggregated data collection and analysis
- Assess and progress on **cross-CGIAR gender research priorities** and identify **gaps**
- Foster and catalyze **strategic partnerships**

## 2018 highlights *(so far!)*



- **European Commission literature review on Gender Transformative Approaches**
- **Knowledge management/communication**
  - *Monthly webinars (7 to-date, 2 coming)*
  - *Quarterly newsletters*
  - *Engendering data and methods blog*
  - *Campaigns (IWD and IDRW)*
- **Call-ins** CRP Gender Research Coordinators & Center gender representatives
- Call for cross-CGIAR gender research proposals: **5 gender dynamics in seed systems research projects** co-funded in 2017; **5 feminization of agriculture research projects** to be co-funded 2018
- **Resource mobilization** and **partnership development**
- **Outreach** to CGIAR gender communities of practice and thematic groups (including GENNOVATE, GRIT, Gender and Breeding Initiative)
- **Events:** Second annual scientific conference and capacity development workshop



## A few statistics

- International Women's Day (**1,736 views**, 18 enjoys)
- **27,000** web page views (+12%)
- **617** news subscribers (+14%)
- Newsletter: **32.4% open** (-11%), **13.3% clicks** (+9%)
- Nearly **500** Twitter followers (and counting!)
  
- Average registered webinar participants: **95 (+30%)**, average effective participant **44 (+2%)**
- **28.5** webinar recording downloads on average (**+62%**)
  
- Webpage stats (2018):
  - Location: US, India, Kenya, UK, NL, Nigeria, Australia, Germany, Italy, Canada
  
  - Most popular pages:
    - Home page (11.44%), GENNOVATE (7.16%), Annual conference 2018 (6.08%), Vacancies (4.82%), Webinar on measuring empowerment (3.37%), About us (3.30%), News (2.83%), Events (2.53%), Resources (2.32%), Scientific conference call (2.11%)
  
  - Gender: 67.12% female – 32.88% male = nearly the same as last year slightly better balanced)

# Our twitter followers



- Ranjitha Puskur (*still by far our most fervent supporter!!*)
- GREAT agriculture (big champion coming through in 2018!!)
- WLE
- PIM
- CGIAR
- Cultural Practice LLC
- Catherine Mungai





# CGIAR gender community

December 2017, Amsterdam



## September 25-27 scientific conference



### Objectives

1. To engage CGIAR scientists in the development of a **cross-CGIAR framework for gender research** that reflects the system's priorities, strengths and gaps.
2. To **collectively reflect** on the contribution of CGIAR gender research on aqua/agriculture and natural resource management for the **broader field of gender and development.**
3. To promote **knowledge-sharing**, critical feedback and networking amongst researchers engaged in gender research working **towards higher quality outputs.**



## Conference Program – some highlights



- Keynote address: Jemimah Njuki, IDRC
- Plenaries
  - **Gender in the Ethiopian agricultural research for development context**
  - What development partners really want (and need!) from gender research
  - **Cross-CGIAR Research Program Gender Research Agenda**
  - Gender Research Marketplace: Science Leaders' reflections
  - **Framing CGIAR Gender Research**
  - Talk show "Under the Gender Lens"
- Science Rounds - over 40 presentations of CGIAR gender research
- Two social evenings (ILRI-sponsored and WLE-sponsored)



# Today – September 25



10-11h	<b>Next Generation Gender Research: looking to the past to inform the future</b> <b>Jemimah Njuki</b> , International Development Research Centre
11-11h30	<b>Ethiopian Coffee Ceremony</b> (sponsored by ILRI Gender team)
11h30-13h	<b>Science Round 1</b> <ul style="list-style-type: none"><li>• Gender dimensions of health and nutrition (<i>Info Center</i>)</li><li>• Gender dimensions of water management (<i>Sof Omor</i>)</li><li>• Gender norms and innovation (<i>Konso</i>)</li></ul>
13h-14h15	<b>Lunch</b>
14h15-15h30	<b>Gender in the Ethiopian agricultural research for development context</b> ( <i>plenary</i> )
15h30-16h	<b>Coffee break</b>
16h-17h30	<b>Science Round 2</b> <ul style="list-style-type: none"><li>• Aspirations in understanding gender dynamics (<i>Konso</i>)</li><li>• Measuring and assessing women's empowerment (<i>Info Center</i>)</li><li>• Gendered adoption of technologies and/or practices (<i>Sof Omor</i>)</li></ul>
17h30-17h45	<b>Wrap-up</b> ( <i>Lalibela</i> )
18h30----	<b>ILRI-Sponsored Social Evening</b> ( <i>cafeteria – inside and outside</i> )





# ROK BAR

MADE & OWNED  
BY WOMEN



**JOIN  
US NOW**  
[WWW.ROKBAR.NL](http://WWW.ROKBAR.NL)

## ROKBAR IS

*A MOVEMENT FOR CHANGE*

## ROKBAR STANDS

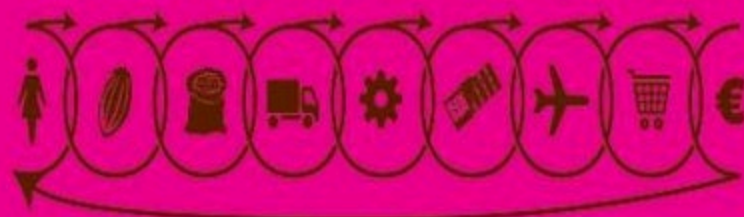
FOR (E)QUALITY AND SOCIAL JUSTICE

## BUYING YOUR ROKBAR

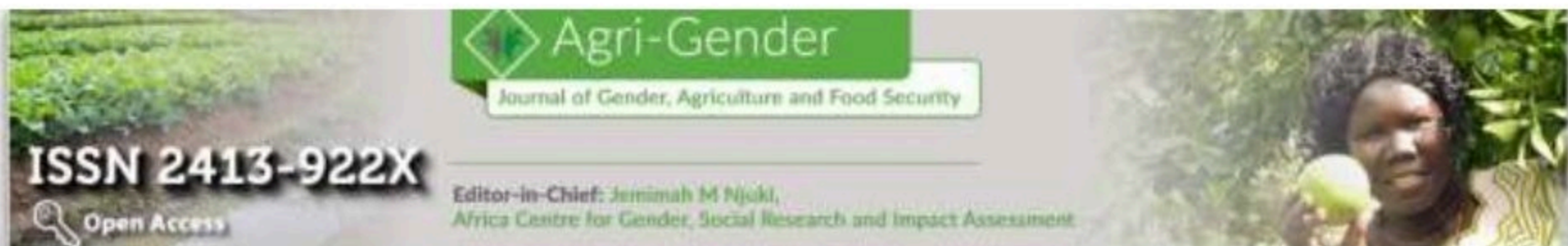
*MEANS YOU CHOOSE TO SUPPORT WOMEN  
IN THE CHAIN TO GROW THEIR BUSINESS*

## ROKBAR IS

A CHOCOLATE BAR THAT ROKS!







**Agri-Gender**  
Journal of Gender, Agriculture and Food Security

**ISSN 2413-922X**

 **Open Access**

Editor-in-Chief: Jemimah M Njuki,  
Africa Centre for Gender, Social Research and Impact Assessment

- Home
- Aims and Scope
- Guidelines for Authors
- Note for Reviewers
- Submission Process
- Editorial Board
- Contact Us
- View All Issues
- Special Issues

The Journal of Gender, Agriculture and Food Security (Agri-Gender) is an international, open access, peer-reviewed and refereed journal published by the Africa Centre for Gender, Social Research and Impact Assessment. The main objective of Agri-Gender is to provide an intellectual platform for international scholars to publish their research work on gender, agriculture and food security. The journal aims to promote interdisciplinary research related to gender and the agricultural and food sciences.

**Spetember 2018, Volume 3, Issue 1**

**Qualitative, comparative, and collaborative research at large scale: An introduction to GENNOVATE**

Lone Badstue, Patti Patesch, Shelley Feldman, Gordon Frain, Marlène Elias and Paula Kantor  
[Abstract](#) | [Full Paper](#)


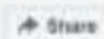
**Qualitative, comparative, and collaborative research at large scale: The GENNOVATE field methodology**

Patti Patesch, Lone Badstue, Laura Camfield, Shelley Feldman, Gordon Frain, and Paula Kantor  
[Abstract](#) | [Full Paper](#)

**What drives capacity to innovate? Insights from women and men small-scale farmers in Africa, Asia, and Latin America**



**Agri-Gender Journal**  
538 likes

 Like Page  Share

2 friends like this



**BLOG NEWS**

What are the Consequences of Male Out migration on W...



By The Hair Stylist  
From your hair, you can tell a lot about your personality. It's all about the color, texture, and style.

Powered by  WordPress |  AdChoices

Empowering rural women through business development...

Launch of the AgriGender Journal

Special Issue on catalyzing and measuring innovation...



“We would like to acknowledge all CGIAR research programs and Centers for supporting the participation of their gender scientists in this conference. In particular, we are grateful for the window 1 and 2 allocation from the CGIAR Research Program on Policies, Institutions and Markets (PIM), which has made this week’s events possible.”



Photo: Neil Palmer/IWMI

